



Diagnose | Design | Deliver

Providing you with a safe, legislative and sustainable turnkey solution for your properties.



starfish
construction group

Building Performance

The performance of buildings is becoming increasingly scrutinised. All buildings must conform to Building Regulations, Codes of Practice and Best Practice. The Fire and Thermal Performance of Buildings are of particular importance following previous loss of life and the environmental challenges associated with global warming.

Insurance Companies are increasingly stringent in their assessment of the Building Envelope and its ability to withstand the possible impact of fire. Loss Prevention Certification Board (LPCB), Factory Mutual and the Building Research Establish (BRE) are at the forefront of ensuring that buildings and construction materials are safe for their inclusion on and within structures.

In recent years Insurance Companies have refused policies on client's properties due to the use of combustible materials on the façade of the buildings or within the internals. Financial lenders are also applying Zero Rating Values on properties, which contain materials deemed combustible, thereby restricting the property owners/potential purchasers from taking out mortgages or borrowing against the property.

Another recent problem adversely affecting the Construction Industry is the growth in contractors who do not have the necessary Professional Indemnity Insurance & Contractors Work cover for designing and installing Roofing, Cladding & Building Façade works. Insurance premiums for Professional Indemnity Insurance have rocketed over the past three years. Many Roofing & Cladding companies have altered their policies to remove their ability to design and install systems on larger industrial and residential buildings including tower blocks, in an attempt to reduce insurance premiums.

We advise our clients to closely examine the Professional Indemnity Insurance cover of contractors working on their properties. Starfish Construction has Professional Indemnity Insurance Cover of £10 million, the current UK maximum cover which includes for the Design & Installation of Roofing, Cladding and Building Envelope Systems.

Global warming and climate change are top of the Environmental & Political Agenda. The thermal efficiency of buildings does not just make good environmental sense, it also makes for sound financial reasoning. Prolonged periods of heavy rainfall are also having a profound impact on buildings and building owners. Antiqued drainage systems are struggling to cope with the sudden deluges that the UK weather systems are increasingly producing.

Designing a Solution for Now and the Future

Optimum material selection, fire safety, acoustic design considerations and lifespan are all part of our process to provide you with information to make the right decisions. Operational excellence comes from highly skilled, experienced and accredited roofing installers overseen by our knowledgeable industry project managers.

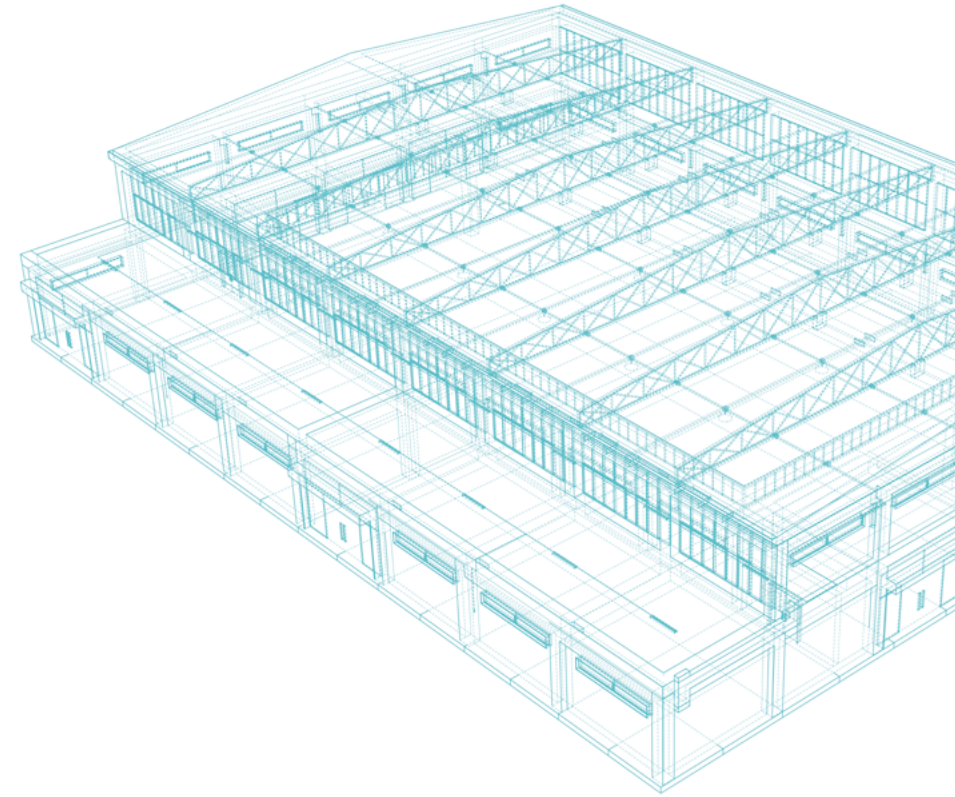
Starfish Construction has a reputation as a trusted, reliable partner formed over many years due to our collaborative approach with clients and successful project outcomes. Our product-neutral approach offers whole of market solutions. We work closely with clients and can assist in budget planning and control operational downtime management during your project.

- Analysis of survey data
- Product natural company
- Drainage
- Acoustic Design
- Fire performance
- Thermal performance
- CAD design
- 3D render Walkthrough

Our design team plays a pivotal role in ensuring your vision, products and materials matches your aspirations. Our design processes and knowledge allow us to reimagine your existing structure to fit the demands of today.

The design doesn't merely stop at how a building looks, and our acoustic modelling will help control sound impact.

Everything we do starts with you and your specifications. Whether designing a roof, a cladding system or a complete building, we put our clients at the heart of every project and guide your objectives with informed consultation.





Starfish Construction believes that to resolve the many challenges/issues which affect our buildings in the 21st Century, it is imperative that we fully analyse and understand the problems.

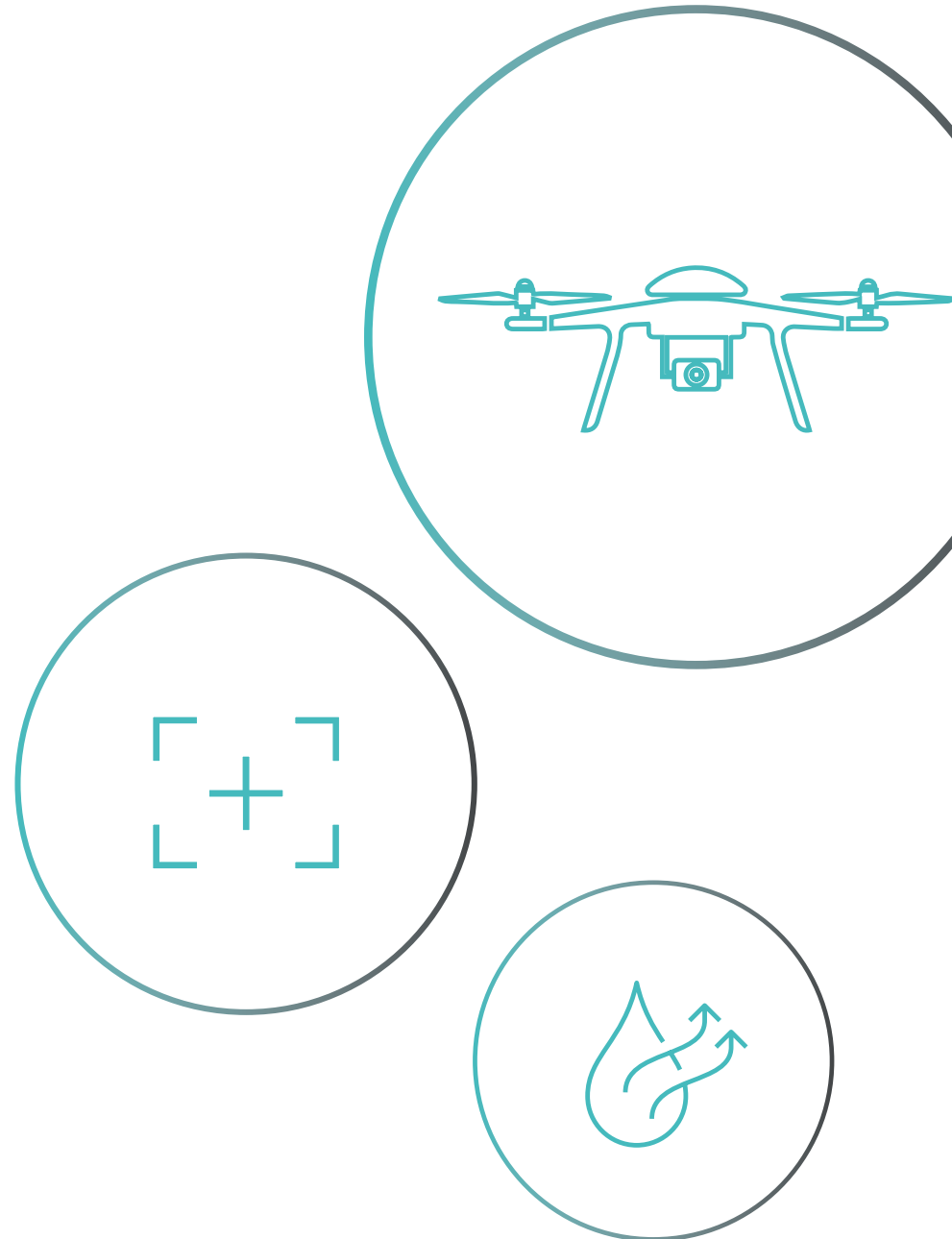
To design the solution, we must first diagnose the problem.

Diagnose

Starfish Construction uses the following techniques to analyse the performance of a building and to investigate and diagnose the issues:

- Thermographic Drone Surveys
- Drone Surveys
- Moisture Mapping
- Electronic Leak Detection Tests
- Borescope Investigation
- Core Sampling & Material Analysis
- Photographic Evidence
- Building Information Modelling (BIM)

Once we have completed the investigation and evidence gathering process, we embark on providing bespoke designed solutions for our client's buildings. These solutions cover the short, medium and long-term and are designed to meet both our client's needs and their financial budgets.



Diagnose

Please reference the following checklist to ensure that you and your buildings are protected.

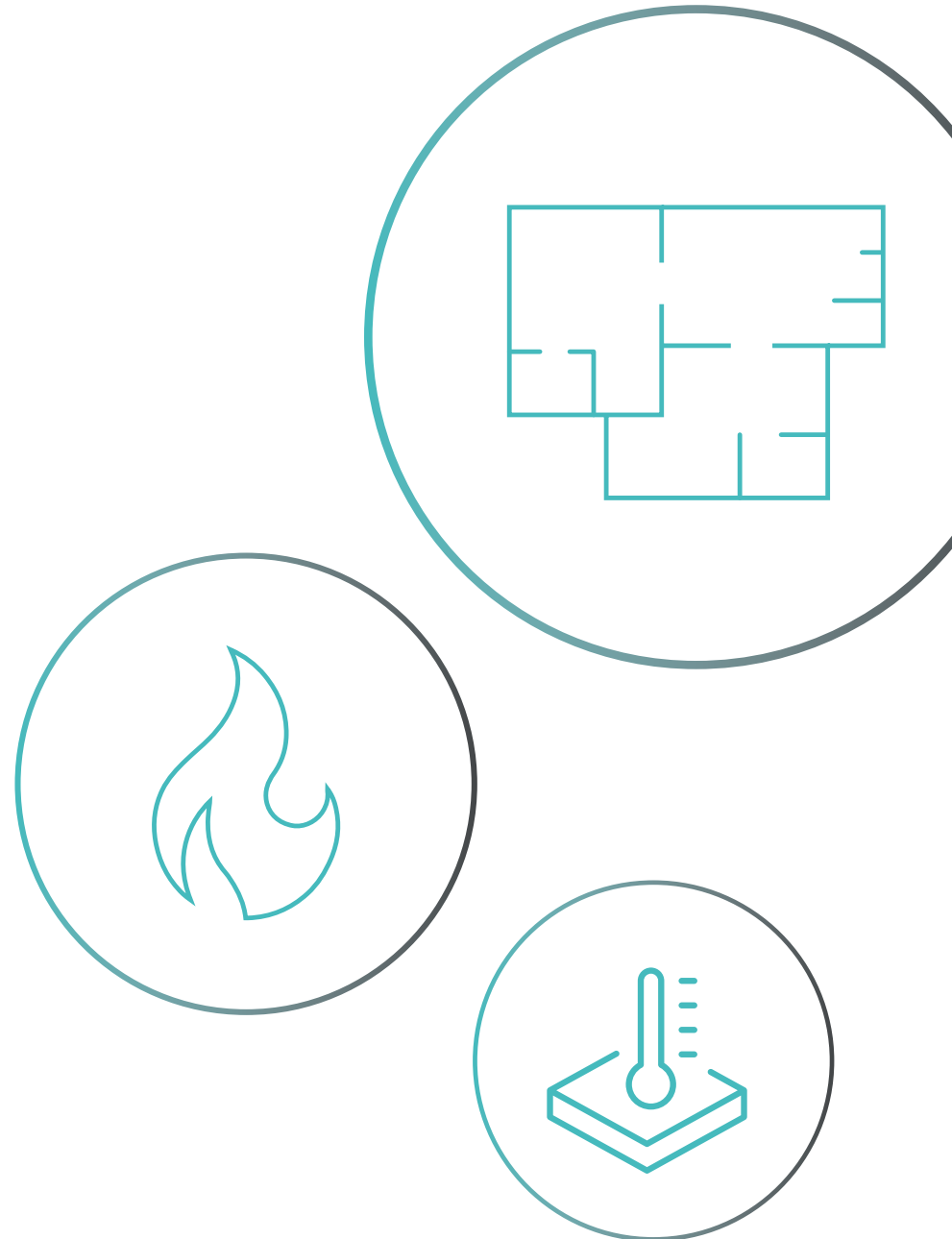
Diagnose Checklist	Starfish
Thermographic Drone Surveys with Fully Qualified Pilots	✓
Drone Surveys with Fully Qualified Pilots	✓
Moisture Mapping Surveys	✓
Electronic Leak Detection Testing	✓
Core Sampling & Material Analysis	✓
Photographic Evidence	✓
Dye Testing	✓
Borescope Investigation	✓

Design

The Design process takes consideration of UK and International Building Regulations, Codes of Practice and Industry Best Practice methods. We provide the following services for our clients:

- Building Control Advice
- Compliance with Building Standards & Regulations
- Performance Analysis
 - Structural & Loading Calculations
 - Fire Performance
 - Thermal Efficiency (U Value) Calculations
 - Condensation Risk Analysis
 - Drainage Calculations
 - Acoustic Calculations
 - Light Transmission Calculations
 - Design of Access & Walkway Systems
 - Design of Lightning Protection Systems
- Production of Technical Drawings

An estimated 80% of buildings in the UK suffer from the premature failure of components/systems. The fundamental causes of these premature failures are Design & Installation. Once the Bespoke Design has been agreed, it requires experienced/qualified Project Managers and Tradesmen to install quality systems/materials.



Design

Please reference the following checklist to ensure that you and your buildings are protected.

Design Checklist	Starfish
Full Design Capability	✓
Carry £10 million Professional Indemnity Insurance to cover the Design & The Refurbishment/New Works	✓
Provide the Necessary Structural & Loading Calculations to Support the Change in the Configuration/Build Up of Structures	✓
Undertake a Full Fire Assessment of the works to ensure compliance with Building Regulations & Codes of Practice	✓
Provide Thermal Efficiency Calculations (U Values)	✓
Provide Condensation Risk Analysis Calculations	✓
Provide Drainage Calculations	✓
Provide Acoustic Calculations (where necessary)	✓
Design & Provide Lightning Protection Systems (where required)	✓
Design & Protection Access & Walkway Systems	✓
Provide a Full Set of Technical Drawings	✓
Provide an Operations & Maintenance Manual	✓
Provide Detailed Life Cycle Projections	✓
Provide a Range of Warranty/Guarantees	✓

Deliver

Our aim is to deliver our projects safely, on time, and within budget to the satisfaction of our clients.

Starfish Construction have fully qualified highly experienced Project Management & Site Teams to ensure our projects are a success.

We also have Full Vetted Supply Chain Partners supporting our delivery capability.

All our divisions provide stand-alone solutions, as well as working seamlessly together. All this is driven by our accreditations, including BS EN ISO 9001, 14001 and 45001.



Deliver

Please reference the following checklist to ensure that you and your buildings are protected.

Deliver Checklist	Starfish
Act in The Role of Principal Contractors under CDM 2015 Regs	✓
Act in The Role of Principal Designers under CDM 2015 Regs	✓
Fully Qualified & Highly Experienced Project Management Staff	✓
Fully Qualified & Highly Experienced Design Team	✓
SMSTS Trained Project Managers	✓
SSSTS Trained Project Supervisors	✓
Fully Qualified Directly Employed Workforce	✓
Fully Vetted Supply Chain Partners	✓
UKATA Certified Workforce	✓
Trained First Aiders	✓
Trained Fire Marshalls	✓
IPAF Trained	✓
PASMA Trained	✓

Project Management

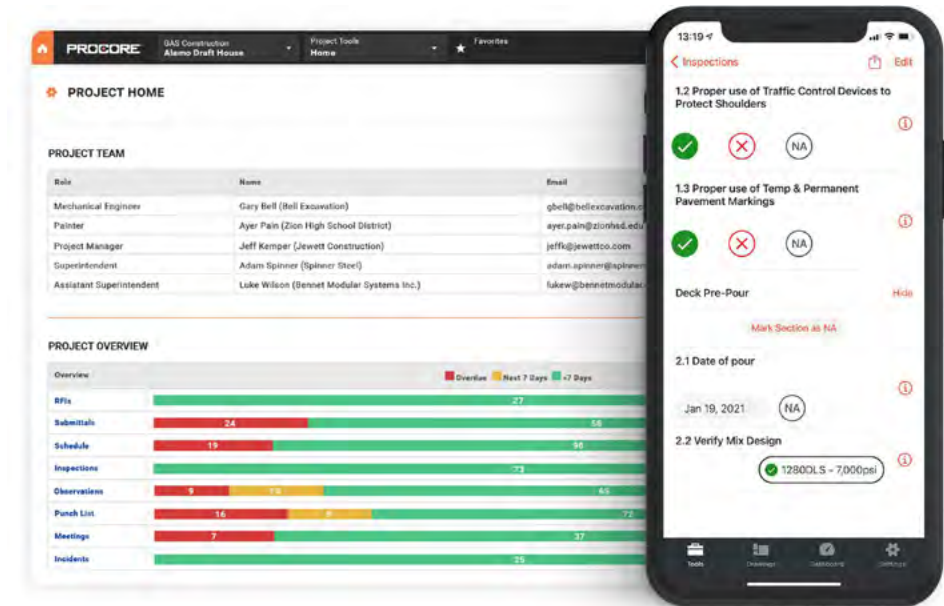


From planning and design to resource management and budget allocation, our Construction Project Management (CPM) helps maintain an effective process to ensure end-to-end, transparent and successful project delivery. Once construction begins, your designated project manager will work with their dedicated team throughout the project.

Our Procore Construction Project Management Software helps us organise the planning, scheduling, construction, resources, and financial reporting related to all projects and maintains a visual and written record at every stage gate.

These project management processes are vital to keeping the project running smoothly from beginning to end.

Managers and supervisors can easily assign and track project schedules, manage and submit digital documents, and create and share all project documentation easily. Our Procore Construction project management software streamlines our processes and increases productivity and mitigates risk - while helping to keep a strict schedule and budget. Our systems and processes create an effective coordination between Starfish Construction and all project stakeholders. We believe in a culture of no surprises, where everyone can assess and make informed decisions through robust data.



Our Operational Hubs

The map shows our current locations and our strategic proposed Operational Hubs.

● Current Operational Hubs

Glasgow

Manchester

London

● New Operational Hubs (coming soon)

Yorkshire

Midlands



UK Wide Enquiries: 0333 016 5399
www.starfishconstruction.com

Glasgow

Manchester

London

HEAD OFFICE: 10 Jerviston Street New Stevenston Motherwell ML1 4LY



starfish
construction group